

## WORKFORCE AND EDUCATION DEVELOPMENT COMMITTEE

**Mission:** Establish and sustain partnerships between businesses, organizations, educators, community members and students to develop a competitive, fully inclusive work force for Christian County.

**Role: Advocacy-** for student achievement and skilled workforce

**Accountability-** in district strategic goals, district financial health, board and superintendent expectations

**Educational Attainment-** Educational opportunities for Preschool, K-12, Gateway Academy, Post-Secondary and Adult Education

### Workforce & Education Steering Committee

*Rich Maddux, Chair*

*Dan Kemp, Past Chair*

*Mayor Carter Hendricks, City of Hopkinsville*

*Nikki Durham, City of Hopkinsville*

*Fannie Louise Maddux, Prichard Committee for Academic Excellence Member*

*Dr. Allssa Young, President, Hopkinsville Community College*

*Jason Vincent, Pennyrile Area Development District*

*Kelli Pendleton, President/CEO, Chamber of Commerce*

*Mary Ann Gemmill, Superintendent, Christian County Public Schools*

*Penny Knight, Principal, Gateway Academy to Innovation and Technology*

*Slone Cansler, Director of the Murray State University- Hopkinsville Campus*

*Taylor Hayes, Kentucky New Era*

[www.christiancountychamber.com](http://www.christiancountychamber.com)

2800 Fort Campbell Blvd. | Hopkinsville, KY 42240 | P 270.885.9096 | F 770.886.2059

#### Chamber Contact:

Angie Major, Director of Workforce & Education Development

amajor@christiancountychamber.com



CHRISTIAN COUNTY  
Chamber of Commerce  
WORKFORCE EDUCATION DEVELOPMENT

# Focus on Education



Annual Report 2016–2017

Sponsored  
by:



## Community Vision Plan 2020: A Clear Vision

**Goal 1: Improve the educational system in our community across all levels.**

Objective 1-Improve soft skills education

Objective 2-Ensure students are ready for the next academic step

Objective 3-Ensure individuals in our community are college and career ready

Objective 4-Continue to improve community education opportunities as this influences overall academic achievement

Key Performance Indicators:

A. Graduation rate of public high schools to be at 95% by 2020

B. Survey business and industry professionals yearly to gauge level of applicants

### GRADUATION RATE

Year	4-Year Adjusted Cohort	5-Year Adjusted Cohort
2016: District	92.2	90.3
2016: State	88.6	89.7
2017: District	91.4	93.1
2017: State	89.8	90.2

### COLLEGE & CAREER READY

Year	CCHS	HHS	DISTRICT	STATE
2016	78.1	87.4	81.8	81.9
2017	93.8	80.1	84.5	77.8

## Education Transformed

**CCPS provides our students with real world experiences through collaborative partnerships with area-wide businesses, industries and accredited colleges.**

We strive to create seamless transitions into the workforce for our students. CCPS offers students various postsecondary opportunities to include college credit attainment and participation in apprenticeship programs. Our Gateway Academy to Innovation and Technology offers 13 career pathways and 4 academies for students to explore specific career options.

**Christian County is the recipient of a national award and title of the "Great American Defense Community."**

CCPS is recognized for its outstanding partnership with the local military installation, Ft. Campbell. We are multi-faceted and mutually supportive of our military-connected students and their families.

**CCPS is recognized state-wide for "Innovations in Technology"**

Our new online registration system is an excellent example of our efforts to keep systems efficient and effective. In addition, we reach more than 200 families through our English as a Second Language (ESL) translation services. 20+ languages are fluently spoken in Christian County.

**CCPS offers a variety of extracurricular activities and clubs to meet the needs of our students.**

CCPS is highly recognized in basketball, bass fishing, chess club, archery and more. In 2016, the Hopkinsville High School Band won the state championship and in 2017, the AFJROTC unit at Christian County High School was named a "Distinguished Unit with Merit" (the highest honor) by the Department of the Air Force.

## Workforce and Education Development

### Initiatives

A team effort between the Chamber of Commerce, the Christian County Public School System, Hopkinsville Community College and the Pennyrile Area Development District resulted in a grant to create more career pathways for students in our region. Kentucky Work Ready Skills Initiative Grant awarded a \$4.2 million dollar grant to be shared between Christian County Public Schools and Hopkinsville Community College, allowing more students to take career and technical classes at both institutions.



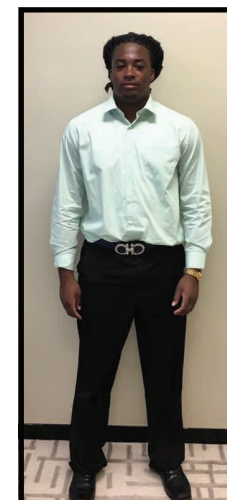
The Partners in Education (PiE) program is a cooperative effort between the Workforce Education Development, the local business community, and Christian County Public Schools. Each school is paired with one or more business partners. Brigitte Blom Ramsey, Executive Director of the Prichard Committee for Academic Excellence was this year's featured speaker at the PiE Kickoff Luncheon.



Danfoss is partnered with Christian County High School as part of the Partners in Education program. Danfoss also partners with Gateway Academy in an Registered State Apprenticeship program. There are currently 4 students from Gateway participating in this



TGASK is partnered with Martin Luther King Jr., Elementary School and served staff members at the school's annual appreciation breakfast. TGASK also partners with Gateway Academy by offering an internship program for students. Elijah Rawlins, HHS student, is the newest member of the TGASK team.



TGASK is a difference maker who is helping us build a skilled, talent pipeline.



### Mental Mapping

The Mental Mapping Program is offered currently to students in grades 10-12 at Christian County and Hopkinsville High School. The purpose of Mental Mapping is to encourage, network and advise students of pathways available to them after graduation. Mental Mapping encourages participation in leadership programs such as, the Mayor's Youth Council, Rotary Scholars Program, and the Governor's Scholars Program(s).

